



# Cat® 303E CR

## MINI HYDRAULIC EXCAVATOR

### FEATURES:

The Cat® 303E CR Mini Hydraulic Excavator delivers high performance, durability and versatility in a compact design to help you work in a variety of applications. The 303E CR features the following:

- **Comfortable operator station** includes an air suspension seat, 76 mm (3 in) retractable seat belt, and a monitor display including fuel gauges and general diagnostics.
- **Key safety features come standard** including ROPS, TOPS and Top Guard Level 1 certification, as well as a travel alarm and the Cat interlock system.
- **With a width of 1550 mm (60 in) and weight of 3530 kg (7,782 lb)**, the 303E CR offers a robust compact radius design with excellent performance and stability.
- **Compact Radius Design** lets you work within confined areas. The radius of the upper body stays within 100 mm (4 in) of the undercarriage so the operator can concentrate on the work being done without having to worry about the back of the machine.
- **High dig forces, fast cycle times and 200 degree bucket rotation angle** deliver the productivity that you demand.
- **Standard features including dozer blade float and automatic two speed** contribute to ease of machine operation and productivity.
- **Cat dealers offer you unmatched customer support** with excellent equipment management services, equipment maintenance and fast parts availability, resulting in optimized performance, reliability and profit.

## Specifications

### Engine

Engine Model	Cat C1.3	
<b>Rated Net Power @ 2,400 rpm</b> ISO 9249/EEC 80/1269	17.5 kW	23.5 hp
<b>Gross Power</b> ISO 14396	18.5 kW	24.8 hp
Bore	78 mm	3.1 in
Stroke	88 mm	3.5 in
Displacement	1.26 L	77 in³

### Weights\*

Operating Weight with Canopy	3310 kg	7,297 lb
Operating Weight with Cab	3530 kg	7,782 lb

\*Weight includes counterweight, rubber tracks, bucket, operator, full fuel and auxiliary lines.

### Travel System

Travel Speed – High	4.5 km/h	2.8 mph
Travel Speed – Low	2.4 km/h	1.5 mph
Max Traction Force – High Speed	15.2 kN	3,417 lb
Max Traction Force – Low Speed	30.9 kN	6,946 lb
Ground Pressure	32.2 kPa	4.6 psi
Gradeability (maximum)	30°	

### Service Refill Capacities

Cooling System	4.7 L	1.2 gal
Engine Oil	5.7 L	1.5 gal
Fuel Tank	45 L	11.8 gal
Hydraulic Tank	47 L	12.4 gal
Hydraulic System	65 L	17.2 gal

### Hydraulic System

Load Sensing Hydraulics with Variable Displacement Piston Pump		
Pump Flow at 2,400 rpm	87.6 L/min	23.1 gal/min
Operating Pressure – Equipment	245 bar	3,553 psi
Operating Pressure – Travel	245 bar	3,553 psi
Operating Pressure – Swing	181 bar	2,625 psi
Auxiliary Circuit – Primary (186 bar/2,734 psi)	60 L/min	15.9 gal/min
Auxiliary Circuit – Secondary (174 bar/2,524 psi)	27 L/min	7.1 gal/min
Digging Force – Stick (standard)	16.6 kN	3,731 lb
Digging Force – Bucket	28.4 kN	6,384 lb



# 303E CR Mini Hydraulic Excavator

## Swing System

Machine Swing Speed	9 rpm
Boom Swing – Left*	80°
Boom Swing – Right	50°

\*Automatic swing brake, spring applied, hydraulic release.

## Blade

Width	1550 mm	60 in
Height	335 mm	13 in
Dig Depth	472 mm	19 in
Lift Height	402 mm	16 in

## Undercarriage

Number of Carrier Rollers	3
Number of Track Rollers	3
Track Roller Type	Double Flange

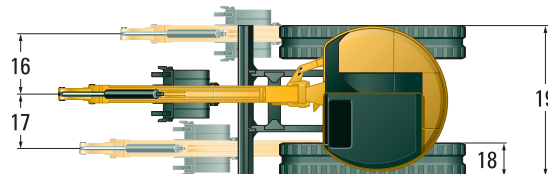
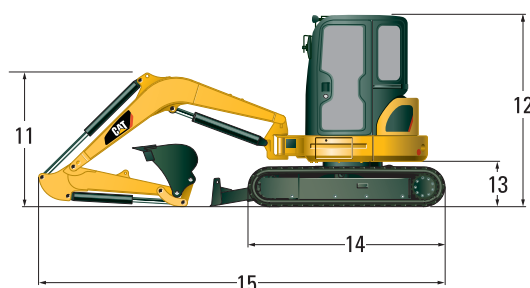
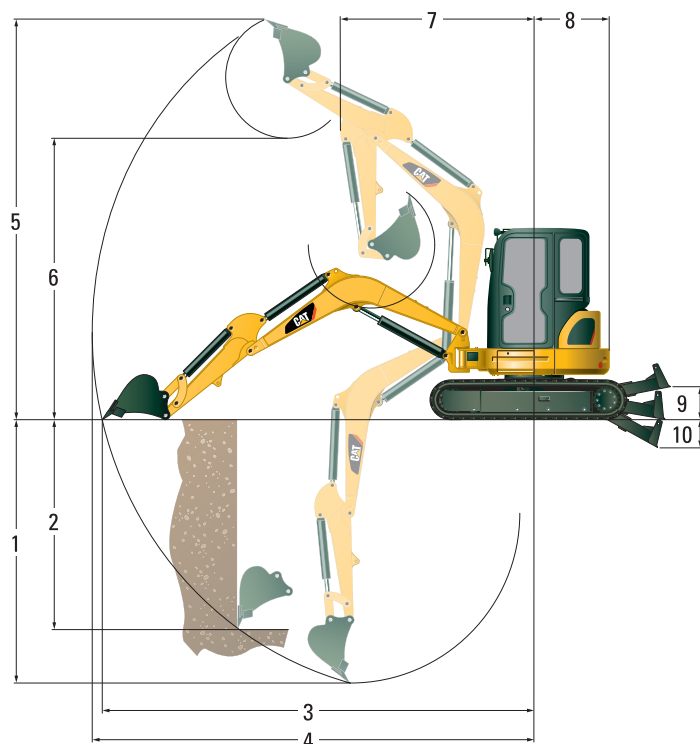
## Certification – Cab and Canopy

Roll Over Protective Structure (ROPS)	ISO 12117-2
Tip Over Protective Structure (TOPS)	ISO 12117
Top Guard	ISO 10262 (Level I)

## Lift Capacities at Ground Level\*

Lift Point Radius		3000 mm (9'8")		4000 mm (13'1")	
		Front	Side	Front	Side
Blade Down	kg	1170	540	670	310
	(lb)	(2,580)	(1,191)	(1,477)	(684)
Blade Up	kg	570	480	280	280
	(lb)	(1,257)	(1,058)	(617)	(617)

\*The above loads are in compliance with hydraulic excavator lift capacity rating standard ISO 10567:2007 and they do not exceed 87% of hydraulic lifting capacity or 75% of tipping capacity. The excavator bucket weight is not included on this chart. Lifting capacities are for standard stick.



## Dimensions

1 Dig Depth	2750 mm	108 in
2 Vertical Wall	1960 mm	77 in
3 Maximum Reach at Ground Level	4810 mm	189 in
4 Maximum Reach	4950 mm	195 in
5 Maximum Dig Height	4530 mm	178 in
6 Maximum Dump Clearance	3150 mm	124 in
7 Boom In Reach	2110 mm	83 in
8 Tail Swing	890 mm	35 in
9 Maximum Blade Height	402 mm	16 in
10 Maximum Blade Depth	472 mm	19 in

11 Boom Height in Shipping Position	1590 mm	63 in
12 O/A Shipping Height	2500 mm	98 in
13 Swing Bearing Height	565 mm	22 in
14 O/A Undercarriage Length	2210 mm	87 in
15 O/A Shipping Length	4470 mm	176 in
16 Boom Swing Right	825 mm	32 in
17 Boom Swing Left	610 mm	24 in
18 Track Belt/Shoe Width	300 mm	12 in
19 O/A Track Width	1550 mm	60 in

## STANDARD EQUIPMENT

---

- 1-way and 2-way (combined function) auxiliary hydraulic lines
- Adjustable armrests
- Alternator
- Automatic swing park brake
- Automatic two speed travel
- Auxiliary line quick disconnects
- Boom cylinder guard
- Cab mounted work light
- Canopy with Top Guard ISO 10262 (Level 1), ROPS ISO 12117-2 and TOPS ISO 12117
- Coat hook
- Cup holder
- Control pattern changer
- Dozer blade with float function
- Foot travel pedals
- Gauges or indicators for fuel level engine coolant temperature, hour meter, engine oil pressure, air cleaner, alternator and glow plugs, service interval
- Horn
- Hydraulic oil cooler
- Lifting eye on bucket linkage
- Lockable storage box
- Low maintenance linkage pin joints
- Maintenance free battery
- Rubber track
- Retractable seatbelt
- Standard stick
- Suspension seat, vinyl covered
- "Thumb ready" sticks
- Travel alarm

## OPTIONAL EQUIPMENT

---

- Beacon socket for canopy machines
- Boom mounted light
- Cab, Top Guard ISO 10262 (Level 1), ROPS ISO 12117-2 and TOPS ISO 12117
- High back suspension seat, fabric covered
- Mechanical quick coupler
- Mirrors for cab and canopy
- Steel track

# 303E CR Mini Hydraulic Excavator

---

For more complete information on Cat products, dealer services, and industry solutions, visit us on the web at [www.cat.com](http://www.cat.com)

© 2015 Caterpillar  
All Rights Reserved  
Printed in U.S.A.

Materials and specifications are subject to change without notice. Featured machines in photos may include additional equipment. See your Cat dealer for available options.

CAT, CATERPILLAR, SAFETY.CAT.COM, their respective logos, "Caterpillar Yellow" and the "Power Edge" trade dress, as well as corporate and product identity used herein, are trademarks of Caterpillar and may not be used without permission.

AEHQ7318-01 (02-15)  
Replaces AEHQ7318  
(Americas North and South)

